

**Meritscholarshiplist.com**  
**How to Use Advanced Search**

Advanced Search allows you to enter several different search criteria that apply to a specific student.

How Would You Like to Search?

*(Select One)*

Advanced Search  
 By School Name – see all merit scholarships offered by the school  
 By Merit Aid for Freshmen Without Need

**You will then enter or change criteria listed on the screen – answer as though you are the student who is searching for colleges/scholarships.**

**1** Advanced Search

What states will you consider for college?  
*Select one or more states below*

AK  AL  AR  AZ  CA  CO  CT  DC  DE  FL  GA  HI  IA  ID  IL  IN  KS  KY  LA  MA  
 MD  ME  MI  MN  MO  MS  MT  NC  ND  NE  NH  NJ  NM  NV  NY  OH  OK  OR  PA  
 RI  SC  SD  TN  TX  UT  VA  VT  WA  WI  WV  WY

Are you an international student? Yes  No

What state do you live in?

What types of colleges are you interested in? Public  Private  Both

What scholarship amounts do you want to see?  
*Select one or more options below*

Full Ride  Full Tuition  Half Tuition or More  Less Than Half Tuition  Out of State Tuition Waiver  Other

What scholarship types do you want to consider? Automatic  Competitive  Both

Do you have a strong level of talent in any of the following - Art, Music, Dance, Theater? Yes  No

Are you a national merit finalist, semi-finalist or commended student or a Hispanic recognition scholar? Yes  No

What is your high school GPA (unweighted)?  What is your SAT or ACT score?  **OR**

**What states will you consider for college?** – One or more states must be selected. The more states you select, the more likely that you will exceed the maximum # of search results allowed at one time (500 scholarships).

**Are you an international student?** – This controls whether you see scholarships that are open to international students. If “Yes” is selected, only scholarships available to international students will be shown.

**What state do you live in?** – This controls whether in-state or out-of-state scholarships are shown. *Note: You may see some out-of-state scholarships that don’t apply to the state you live in.*

**What types of colleges are you interested in?** – Defaults to both, but if you only want to see Private schools or Public schools, change the value here.

**What scholarship amounts do you want to see?** – The more values you include in the same search here, the more likely that you will exceed the maximum # of search results allowed at one time (500 scholarships).

**What scholarship types do you want to consider?** – Defaults to both, but if you only want to see Automatic scholarships or Competitive scholarships, change the value here.

Automatic scholarship – Lists criteria for the scholarship; any student meeting the criteria receives the scholarship

Competitive scholarship – May or may not list criteria for applying to the scholarship; applicants compete for a limited number of scholarships; may or may not involve a separate application; may or may not involve an on-campus competition

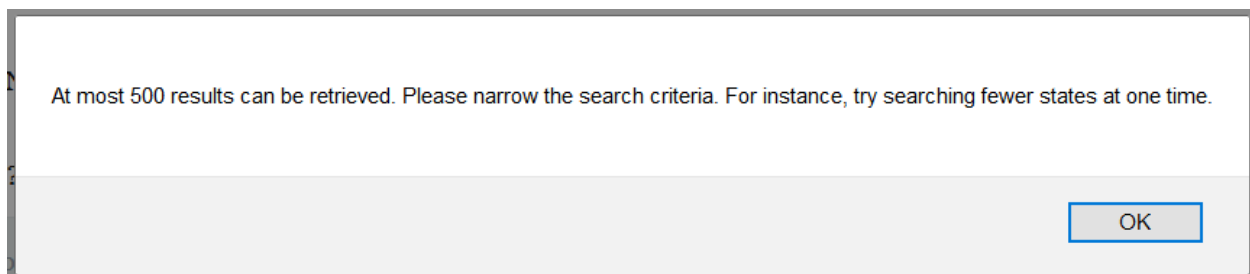
**Do you have a strong level of talent in any of the following?** – Controls display of talent scholarships. At this time, you cannot isolate to only showing one type of talent scholarships, it's all or none.

**Are you a National Merit finalist, semi-finalist, or commended student or a Hispanic recognition scholar?** – “Yes” will display all scholarships specific to students earning these designations

**What is your high school GPA (unweighted)?** – Controls display of scholarships with a minimum GPA requirement. You will not see scholarships that require a higher GPA than what is entered. *This is a required field for all except international students.*

**What is your SAT or ACT score?** – Controls display of scholarships with a minimum SAT or ACT score requirement. You will not see scholarships that require a higher score than what is entered. *This is not a required field. You can only enter one score or the other.*

If your search resulted in more than 500 matching scholarships, you will not see search results and will instead see this popup on the screen:



As long as there are no more than 500 matching scholarships, your search results will display on a page like the one shown below. **At this point, colleges will display and not individual scholarships.**

# Merit Scholarship Search Results

HERE ARE THE SCHOOLS THAT HAVE SCHOLARSHIPS YOU MAY QUALIFY FOR

To see the actual scholarships offered by each school, select the box to the left of the school name and hit Search Checked Results

Showing 1 through 50 of 118 Schools – Click Column Labels to Sort

CHECK ALL SCHOOLS		SEARCH CHECKED RESULTS								
Search	↕ School Name	↕ State	↕ Undergrad Enrollment	↕ Acceptance Rate	↕ 4-Year Graduation Rate	↕ Mid-50% ACT Range	↕ Mid-50% SAT-V Range	↕ Mid-50% SAT-M Range	↕ Yearly Tuition (In State)	↕ Yearly Tuition (Out of State)
<input type="checkbox"/>	Buena Vista University	IA	3,311	64%	N/A	19 - 26	400 - 510	440 - 490	\$32,210	\$32,210
<input type="checkbox"/>	Coe College	IA	1,498	50%	N/A	22 - 28	510 - 620	510 - 650	\$40,670	\$40,670
<input type="checkbox"/>	Cornell College	IA	1,041	71%	N/A	23 - 29	475 - 655	495 - 620	\$39,675	\$39,675
<input type="checkbox"/>	Drake University	IA	6,153	69%	72.9%	25 - 30	510 - 650	540 - 690	\$35,060	\$35,060

All columns with the green double arrows may be sorted. **When the search results span multiple pages, only the current page will sort.**

You can look through the colleges displayed and select which ones you want to see scholarships for, or use the “Check All Schools” button to select all schools on the page. *Note: This function works page by page, so you would need to look at schools on each page of search results separately – a new window will open after you select schools on the current page.*

After selecting the colleges you want to see on the current page of results, use the “Search Checked Results” button to display the matching scholarships for each school selected. *Remember, you will only see scholarships that match your original search criteria.*

Scholarships will display as shown below:

Merit Scholarship Search Results (click school name for details)

SAVE CHECKED RESULTS		Showing 1 through 12 of 12 Scholarships – Click Column Labels to Sort			
↕ Save	↕ School Name	↕ State	↕ Scholarship Type	↕ Scholarship Value	↕ Scholarship Name
<input type="checkbox"/>	<a href="#">Buena Vista University</a>	IA	Competitive	\$12,000 to \$17,000	Arch Scholarship
<input type="checkbox"/>	<a href="#">Buena Vista University</a>	IA	Competitive	\$15,000 to \$20,000	Heritage Scholarship
<input type="checkbox"/>	<a href="#">Buena Vista University</a>	IA	Competitive	\$17,000 to \$22,000	President's Scholarship

When you click on the school name in any row, a new window will open with the details for that scholarship and that school, like the one shown below. *Note: There are more fields on the screen than what I have included below.*

Buena Vista University  
Iowa  
Arch Scholarship

SAVE SCHOLARSHIP TO YOUR ACCOUNT

Scholarship Details			
Arch Scholarship is awarded based on high school CGPA, ACT score and residency status. This is renewable based on 2.5 CGPA.			
<a href="#">Visit School Site</a>			
Scholarship Information			
Scholarship Type	Competitive		
Scholarship Amount	\$12,000 to \$17,000		
For International Students			
Required SAT	0		
Required ACT	0		
Required GPA	0.00		
Eligibility for Public Schools (In State, Out of State, Both)			
School Information			
BASIC Information		Mid-50 % Scores	
School Type	Private	SAT Math*	440 - 490
Yearly Tuition (In State)*	\$32,210	SAT Verbal*	400 - 510
Yearly Tuition (Out of State)*	\$32,210	ACT Composite*	19 - 26
Total Cost of Attendance (In State)*	\$44,788		
Total Cost of Attendance (Out of State)*	\$44,788		
Undergraduate Enrollment*	3,311		
Acceptance Rate*	64%		

For more information on how to filter search results, see [Filtering Search Results](#).

For more information on the fields on the Scholarship Details screen, see [Understanding the Scholarship Detail screen](#).